

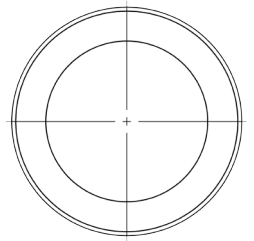
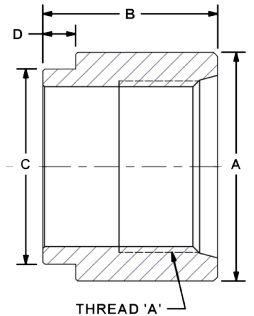
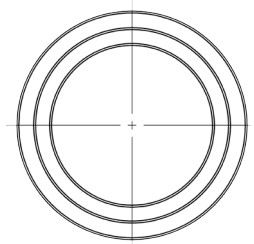
CSN Half Coupler

Facilitates return line to reservoir
Sizes $\frac{3}{8}$ " to 2"



The CSN Half Coupler is the downline coupling with a difference. DMIC's design offers both Non-Pilot & Piloted versions to meet your design requirements.

- Non-Pilot for Inline or Custom tank applications.
- Pilot available for square placement on reservoir.
- EZ-Weld material.
- Made in USA for rapid delivery.
- Suction to 3000PSI.



CSN Half Coupler	With Pilot Dimensions				
	Port Size	Dimensions IN			
		A	B	C	D
B	$\frac{3}{8}$ "	0.94	0.88	0.81	0.18
	$\frac{1}{2}$ "	1.13	1.11	1.00	0.25
N	$\frac{3}{4}$ "	1.50	1.24	1.25	0.25
	1"	1.75	1.33	1.50	0.25
S	$1\frac{1}{4}$ "	2.13	1.38	1.87	0.25
	$1\frac{1}{2}$ "	2.38	1.38	2.12	0.25
W4	2"	3.00	1.45	2.62	0.25

CSN Half Coupler	No Pilot Dimensions		
	Port Size	Dimensions IN	
		A	B
B	$\frac{3}{8}$ "	0.94	0.70
	$\frac{1}{2}$ "	1.13	0.86
N	$\frac{3}{4}$ "	1.50	1.00
	1"	1.75	1.08
S	$1\frac{1}{4}$ "	2.13	1.13
	$1\frac{1}{2}$ "	2.38	1.00
W4	2"	3.00	1.13

Ordering Codes

CSN		**		S		1		1		Null	
Code		Description		Code		Description		Code		Description	
Size Code		Thread		Adapter Material		This code is always "1"					
Code	Port Size	Code	Description	Code	Description						
03	$\frac{3}{8}$ "	B	BSPP-M	1	Low Carbon Steel						
05	$\frac{1}{2}$ "	N	NPT-F	2	Stainless Steel						
07	$\frac{3}{4}$ "	S	SAE-F ORB								
10	1"	W4	SCH.40 SW.								
12	$1\frac{1}{4}$ "										
15	$1\frac{1}{2}$ "										
20	2"										

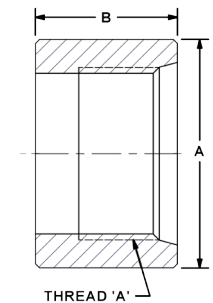
Choose Adapter Size
Replace ** with the desired adapter size.

Alternate External Thread Standard

Replace the "S" SAE ORB standard thread connection with a choice from the "Thread Side" table. Please call to confirm price and availability.

Alternate Weld Connection Standard

DMIC does not offer any alternate weld connections for the FFW model adapter. For a Socket Weld variation, see SSW on page 7.



Due to our policy of continual product improvement, the specifications in this catalog may change without notice. When designing by spec, please request a certified print.

